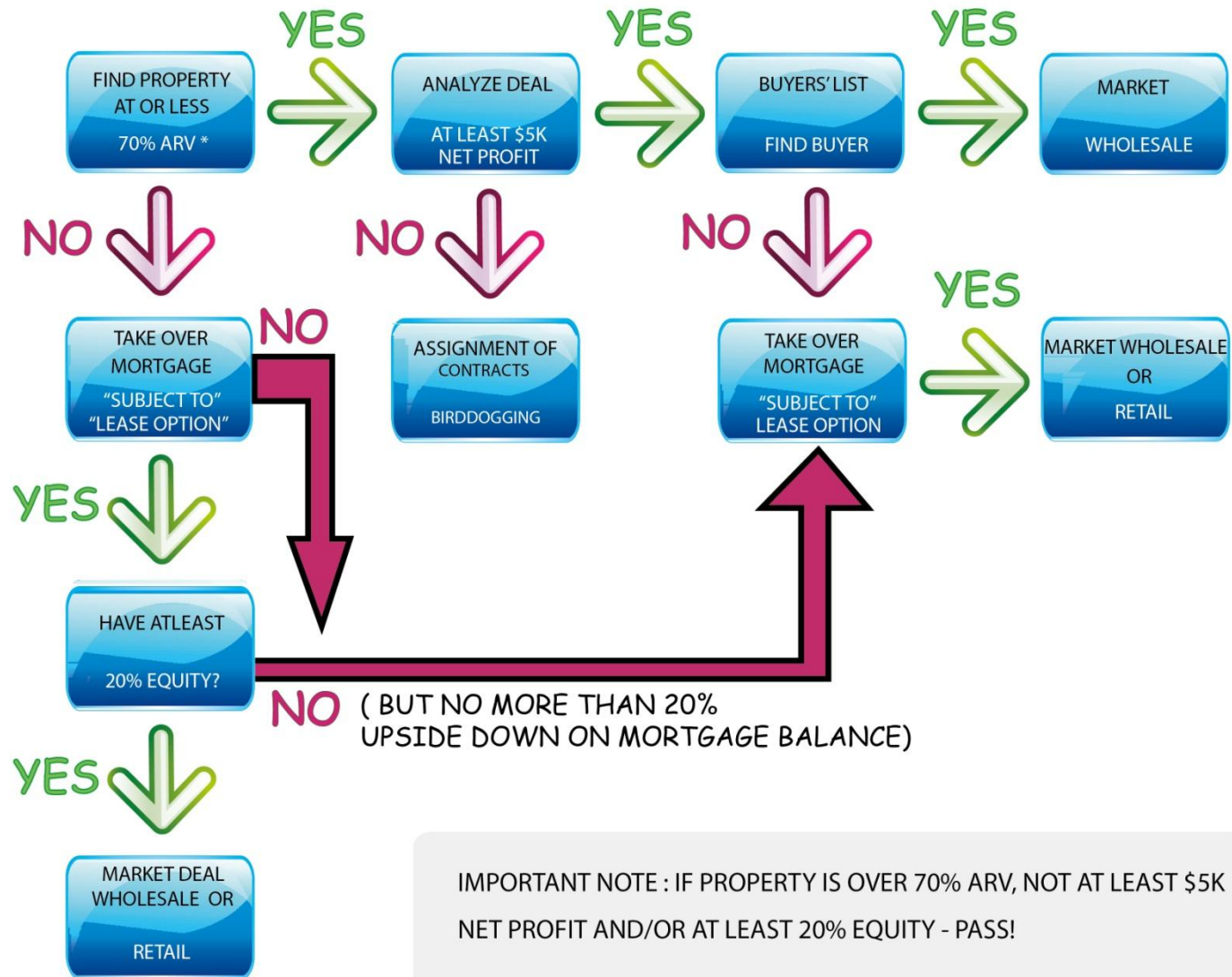


WHOLESALE PROCESS FLOWCHART



IMPORTANT NOTE : IF PROPERTY IS OVER 70% ARV, NOT AT LEAST \$5K NET PROFIT AND/OR AT LEAST 20% EQUITY - PASS!

PURCHASE PRICE + REPAIR COSTS (IF ANY) + CLOSING/FINANCING COST + YOUR PROFIT = ARV

* ARV= ACTUAL RETAIL VALUE